

POINCIANA ^{STEM} ELEMENTARY

SCIENCE

TECHNOLOGY

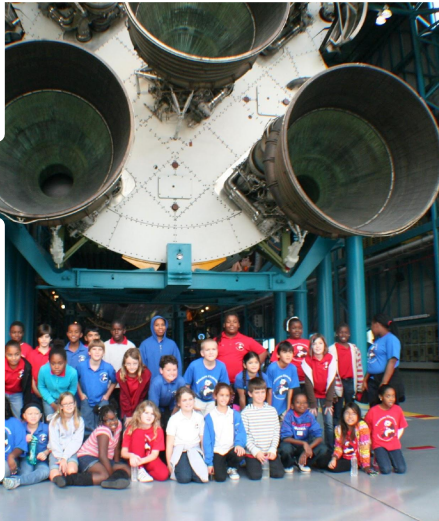
ENGINEERING

MATH

Science



Technology



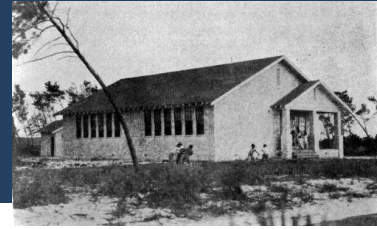
Engineering



Mathematics



Poinciana **STEM** Choice School



- Recognized as a historic school. Serving the Boynton Beach Community for over 100 years.
- STEM Magnet began in 1994, current building opened in 1996
- 515 students attend from Boca to West Palm Beach
- Full Time Gifted/Enrichment Program Instituted in 2013
- Choice STEM Program Implemented in two parts
 - STEM Lab Experiences
 - Classroom STEM Integration – Project Based Learning

Administration



Mrs. Tanya McDowell
Principal



Dr. Valerie Valcourt
Assistant Principal



Times to Remember

7:30 a.m.

School opens for breakfast

7:45 a.m.

First bell rings (students can go to their classrooms)

8:00 a.m.

School starts (all students expected to be in their classrooms)



2:05 p.m.

End of the school day

Poinciana Teachers are Awesome

National Board Certified Teachers

Highly Qualified Florida Certified Teachers

High % of teachers with Advanced Degrees

High % of teachers with Endorsements

Teachers receive ongoing Professional
Development

Faculty and Staff



Poinciana STEM Elementary School

Faculty & Staff
2020-2021

Fox-Mar

Kindergarten Team



Mrs. Beaman



Ms. Bateskas



Mr. Toro



Ms. Ward

Academic Support



Literacy Coach

Ms. Carter



Math Coach

Mrs. Perry

New Student Registration

Mrs. Adams



Registrations by appointments only

Due to the uncertainties surrounding COVID-19, Poinciana STEM Elementary will do in-person or virtual registrations by appointment only. Please refer to the registration checklist document that was emailed . It can also be found on our school website. You can call Mrs. Adams directly at 561-739-5709. Appointment times are daily from 7:30-3. All registrations must be completed by June 21.

KG Registration Requirements

Students must be 5 years old on or before Sept. 1, 2021

Parents/Guardians must submit the following:

- A completed, signed and dated New/Returning Student Registration Form
 - Form PBSO 0636
 - Download form from school district website in .pdf format
 - Type in all information, print, sign and date form
- 2 current Proofs of Residence
- Original Birth Certificate
- Proof of Physical Health Examination (Form DH 3040)
 - Health exam must be dated after August 10, 2020
 - Page 1 must be completed, signed & dated by parent
- Proof of Immunization Status (Form DH 680)
 - All shots required for Kindergarten must be noted

Dresscode



Poinciana Elementary Uniform Dress Code Policy



General Information

Research and experience show that the way students dress has a direct influence on how they behave. Since Poinciana Community expects only the BEST behavior from our students, the school consensus supports the uniform "dress code policy."

Dress Code Violations

Violations will result in:

- Parent Contact
- Student required to change in order to meet dress code



SHIRTS



- School T-Shirts
- Collared Polo style shirts.
- Graphics are prohibited
- Cropped tops are prohibited

All shirts must be a solid color or stripes

PE DAYS ONLY

- Athletic shorts (refer to requirements below)
- School shirts must be worn
- Socks /sneakers required.

Pants & Shorts

- Pants and shorts must be solid: navy blue, black, gray or khaki, Jeans. (*No ripped jeans*)
- Leggings or yoga pants are prohibited
- The length of shorts /skorts / skirts/ jumpers **must be no more than 2-3 inches** above the knee.
- Pants must be worn at the natural waistline, belt when needed.

SHOES

- Shoes must be worn at all times.
(Untied shoelaces are a safety hazard)
- Crocs are prohibited
- Sneakers, loafers, or other closed toe shoes are required.
- No open, unsafe footwear such as flip-flops, sandals, clogs, platform shoes or soles over one-inch.
- Heelys with or without wheels are prohibited.



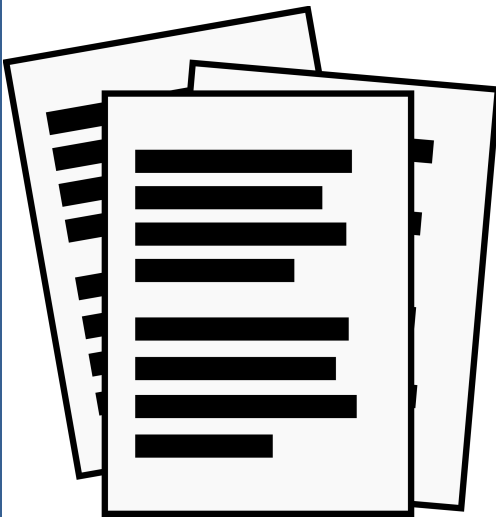
Prohibited Items

- Hats or caps unless for a school sponsored activity
- Tank tops, halter tops, midriffs or cropped top t-shirts
- Clothes with holes, designs, sequins, or rhinestones.
- Backless or cutoff clothing.
- Large, oversized earrings

Supply Lists



Supply Lists



Meet The Teacher (Drive Through Event)

August 6, 2021 (Drive-Thru)

9:00 a.m. - 11:00

(Date is subject to change)

Come meet your child's teacher!

More information is forthcoming

You are invited to bring your child and meet the teacher. Bring in your school supplies from the supply list.

We look forward to meeting you!

COVID District Policies

[COVID Guiding Document](#)

Student Protocols 5.326

- a. All students must:
 - i. not come to school if ill including, but not limited to: symptoms of fever, cough, sore throat, diarrhea, headache, body ache, shortness of breath, fatigue, loss of appetite and sense of smell, and other flu-like symptoms, or if someone in their household has tested positive for COVID-19.
 - ii. self-screen at home prior to reporting to school. Parents and guardians are recommended to take their child's temperature prior to reporting to school and the student shall not report to school if they have a temperature of 100.4 or higher. Students shall not report to school while using fever-reducing medications.

[New COVID Policy Updated](#)

COVID-19 Update

FOLLOW THE 3 W'S

WEAR

- Wear your face mask at all times
- Wear it over your nose and mouth



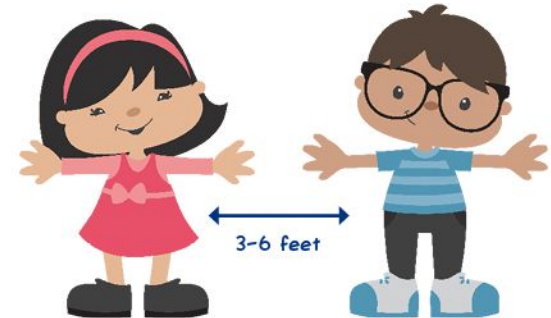
WASH

- Wash your hands
- Wash your tables and supplies



WATCH

- Watch your space
- Watch your supplies



Poinciana STEM Elementary School, along with all Palm Beach County School District schools, is presently not open to the public due to the COVID-19 mandates. School administration is continuously monitoring the situation. All dates shown throughout this presentation are subject to change based on how things progress with COVID-19 and the Palm Beach County School District.

These are very challenging times. Please bear with us as we do all we can to best serve you. We are "Going the Distance, together" and our number one priority continues to be for everyone to stay safe and healthy.

School Safety

School Resource Officer: On campus daily

Kirk Cook

Crisis Intervention Team

- Daily perimeter and campus safety checks
- Monthly Drills Code Red and Fire Drills
- *Educational and Movement Drills*
- Twice Annual Tornado Drills
- Single point of entry

Attendance

Ms. Betz



Attendance/Receptionist

Based on School Board Policy 5.09: The Board, as well as Poinciana, believe that regular and punctual school attendance play important roles in a student's achievement. There is a strong correlation among regular school attendance, academic achievement, and the completion of school. Although school attendance is the responsibility of the parents or guardians and students, the District is dedicated to increasing the meaningful involvement of parents and guardians in all aspects of their students' lives, including the reduction of chronic absences and truancy.

Absences

Absences:

Parents and guardians are responsible for notifying the school when a child will be absent and the reason for the absence within twenty-four (24) hours by a written note or by emailing me at: tanja.betz@palmbeachschools.org.

Please state the child's name, date of absence, teacher and the reason for their absence in the note, I will then mark the absence accordingly.

- At Poinciana, the teacher will call the parent after 3 unexcused absences within a marking period. Thereafter, I/Attendance Clerk, will send a letter home for 5 unexcused absences. Truancy/Guidance will set up a meeting for 7 unexcused absences.

Late Arrivals/Tardiness

Students reporting late to school/class after the day/class period begins are considered tardy. **Students need to be in class by 8:00am and not in the line, drop off area, or hallways.**

Once gates are closed, you'll be directed to park in the office parking lot. Please accompany your child to the front office, where you'll fill out a tardy pass and sign it. Your child will be escorted to class, hand the pass to the teacher for admission to the classroom.

- * A note from the doctor/dentist with the child's name and date will be marked as an excused tardy.
- * Excessive tardiness shall be addressed on a case-by-case basis to determine if there is a pattern of non-attendance.

Early Dismissal & Dismissal Changes

Early Dismissal:

We understand emergencies arise and you may need to pick your child up early. ***Early Dismissal ends at 1:30PM, no exception.***

Bring identification every time you pick up a child.

Excessive early sign-outs will be addressed on a case-by-case basis to determine if there is a pattern of non-attendance.

When possible, plan to make appointments after school, on PDD days and/or vacation days.

Dismissal changes:

All dismissal changes must be in writing. A dismissal change will not be taken over the phone. Please send a note to the teacher or email me directly:

tanja.betz@palmbeachschools.org with those changes as early as possible - no later than 12:00pm.

State your child's name, the teacher's name and the dismissal request, example: from bus to parent pick up.

Kindergarten and new student Anxiety/emotions

School Counseling and Mental Health Team



Ms. Johnson
School Counselor



Ms. Jean-Francois
School Behavior Health Professional



Ms. Barton
Co-Located Mental Health Professional

Kindergarten and new student Anxiety/emotions

*Is your
kindergarten child
ready for school?*

Kindergarten and new student Anxiety/emotions

What they need to be ready for ...

- Exploring language
- Getting Ready to Read
- Paying Attention
- Getting along with others
- Knowing letters, numbers, colors and shapes
- Doing things themselves (“Asking for help.”)
- Being safe by knowing (address, phone#, cross streets, school, etc...

Kindergarten and new student Anxiety/emotions

What they will **need to do...**

- Get along with others (parents, teachers and peers)
- Follow directions
- Identify and regulate their emotions and behaviors
- Think of appropriate solutions to conflict
- Persist on a task
- Engage in social conversation and cooperative play
- Correctly interpret others behaviors and emotions
- Feel good about oneself and others

Kindergarten and new student Anxiety/emotions

What you **can do to help....**

- Provide children with **opportunities to play** with peers or in small groups, either in a formal setting such as preschool, or through play dates.
- Give children **opportunities to remember and follow multi-step directions**. Use every day events such as preparing for dinner or cleaning play areas as opportunities to practice these directions. For instance, “Wash your hands and come to the table for dinner.”
- Teach children how to **share and take turns** with others.

Kindergarten and new student Anxiety/emotions

What you **can do to help...** (cont...)

- Take time to **teach children about their feelings and emotions**, and help them learn how to label them with words.
- Help children **learn to pay attention** by playing games, singing songs, reading and by listening to them.
- Provide children with the **opportunity to feel proud of themselves** by giving responsive feedback such as, “***You used lots of colors in that drawing!***” Instead of “*good job!*”
- Take time to establish some routines. (Example: Regular bedtime, regular wake up.
- Discuss expectations of what to expect.

Fun things you can do with your child...

Alphabets

Numbers

Rhyming Words

Words

Colors

Shapes

Kindergarten and new student Anxiety/emotions

What else helps them learn...

Healthy Foods

Checkups

Rest

Cleanliness

Immunizations

Attendance

Kindergarten Parent Survey

- Hard Copy in your folder
- Electronic copy below and was also emailed to you

[Kindergarten Parent Survey](#)

Florida Standards

- Grade level specific
 - Include rigorous content and application of knowledge through high-order thinking skills
 - Aligned with college and work expectations
 - The goal is "College Ready"
-
- Literacy: Reading
 - Math
 - Writing
 - Science



K-2 Literacy Adoption and New Standards

Benchmark Overview

- B.E.S.T. standards aligned- both ELA and SLA
- K-2 implementation in FY22
 - 3-5 implementation FY23
- Builds knowledge within and across grade levels
 - Each unit focuses on one topic across grade levels
 - Science and social studies topics are aligned to Florida grade level standards
- 50/50 balance of informational and literary text
- Texts include social-emotional and cultural diversity.
- Daily, systematic phonics instruction
- Decodable readers in K-2
- All inclusive (reading, writing, phonics)



What will Teachers Receive?

Grade

K Digital & Print Components

= digital only
 = print only

Whole Group

Teacher's Resource System (TRS)



Read-Aloud

Foundations and Routines

Mentor Read-Alouds

Trade Book Collection

Big Books of Shared Readings and Poetry

Poetry Out Loud!

Exploring the Arts

Media Literacy Handbook

My Reading and Writing Student Books



Big Books of Shared Readings and Poetry



Poetry Out Loud!



Exploring the Arts



Media Literacy Handbook



Extended Read Big Books



Unit Videos



Sing, Swing, and Learn Unit Songs



Phonics Components

Decodable Readers and Lap Books



Phonics Resources



Practice



Assessment



Blended/Hybrid Learning



Digital Platform

All components are available 24/7 from anywhere.

Distance Learning Activities

Daily practice specifically created for remote settings; includes caregiver resources.

Pre-Made Digital Lessons Plans

Customized, digital lesson presentations with built-in links to related content.

Home-School Connections

Take-home activity calendars by unit offer extended learning opportunities with families and caregivers.

Teacher's ePlanner

Organize and share lesson plans that include Florida standards coverage.

Assignments Portal

Manage, customize, deliver, and grade assignments all in one place.

Customizable Interactive E-Books

Annotate, highlight, adjust audio speed, embed videos, and more!

ePocket Chart (lesson-ready)

Drag-and-drop functionality for preloaded words, word parts, and images, plus customizable cards.

Reading Logs

Track students' reading progress and encourage text-related responses in Book Reviews.

Multimedia

Engaging videos introduce units, make phonics fun, and support writing.

Assessments & Reports

Assessments mirror FSA exams, and customizable reports inform instruction.

Intervention

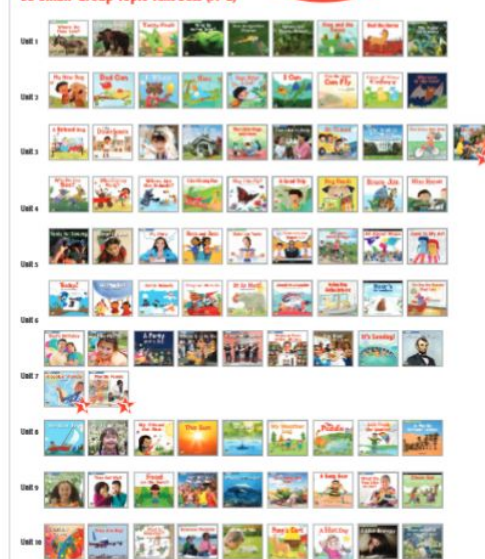


Small Group

Digital and Print Components



93 Small-Group Topic Text Sets (A-E)



Responsive Teaching Tools



Reader's Theater



Reader's Theater



Choice Academy and Fine Arts

Ms. Baillie



Classroom STEM Integration

STEM Content is learned through project based learning, and real world experiences to enhance knowledge and interest.

Poinciana integrates STEM topics into all aspects of learning, including reading, writing, and fine arts. K-5 students are engaged in hands-on science and math activities in their classrooms, which are supported by the school's 2 STEM Labs, Technology Lab, and the Planetarium Classroom.

STEM Labs

Student
Microscopes

Digital
Microscopes

Computer
Probeware

Living
Specimens

Age Level
Appropriate
Lab
Equipment

Ms. Millicarek, K-2 STEM Resource Teacher

Mr. Edmond, 3-5 STEM Resource Teacher



The STEM Labs have a variety of equipment uncommon to elementary schools, including computer-based probeware, digital microscopes, a courtyard native plant area which is an extension of the lab, and a huge variety of math manipulatives to help students understand basic number theory and problem-solving at high levels.

STEM Labs

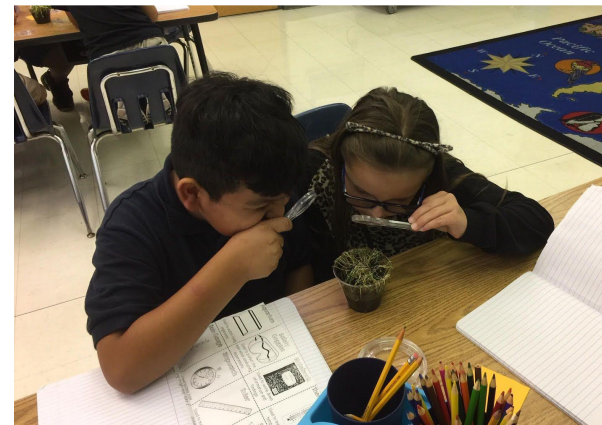
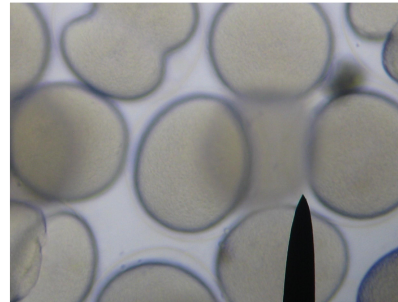
Student
Microscopes

Digital
Microscopes

Computer
Probeware

Living
Specimens

Age Level
Appropriate
Lab
Equipment



Technology and Robotics Lab

Digital
Citizenship
and Online
Safety

Foundations
of Coding

Lego
Mindstorms

Lego WeDo

Additional
Robotics
Systems

Mrs. Knight



The Technology Lab contains a variety of robotics systems which allow students to design, build, and program their own robots and other machines. Computational thinking fosters problem solving as students learn to code a variety of projects including their own robots.



Planetarium Classroom

Spitz A3P
Planetarium
Projector

30 foot
dome

Student
iPads

Telescopes

STEM Builds

EarthKam

Planetarium Teacher, Ms. Danielle Christy



The planetarium at Poinciana Elementary is truly a unique opportunity for students to engage in astronomy and science content. It gives them a real world perspective on the wonders of our universe such as the phases of the moon or seasonal changes in a controlled and awe-inspiring environment. Technology, math, literacy, and social studies are some of the additional concepts that are integrated within the hands-on, immersive experiences. These will be applicable to the real world as you witness your student coming home with inspiration and eagerness to look up.

Planetarium Classroom

Spitz A3P
Planetarium
Projector

30 foot
dome

Student
iPads

Telescopes

STEM Builds

EarthKam



Fine Arts

- PE
- Planetarium
- Music
- Art
- Media/Library
- STEM Labs
- Science Lab
- Guidance/School counseling



Physical Education

Coach McElwain



The physical education program at Poinciana Elementary aims to develop students' physical competence and knowledge of movement and safety, and their ability to use these to perform in a wide range of activities associated with the development of an active and healthy lifestyle.

Music

Mr. Firestone



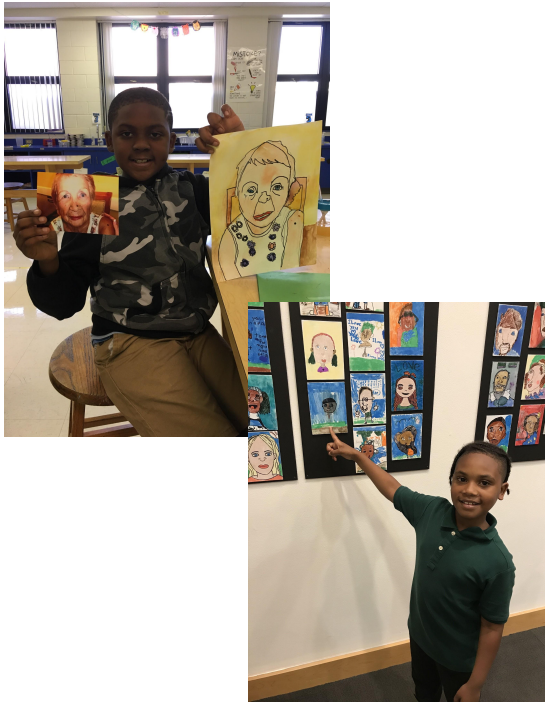
Music has a direct relationship to STEM learning because it is hands on learning. Your child will learn how to play instruments like rhythm sticks, triangles, shakers, tambourines and more. They will start learning how to use their voice by recognizing the different kinds of sounds that their voice can make. Students will be able to listen and move expressively to a variety of music genres and styles while being able to identify and respond to musical opposites such as high and low, fast and slow, and loud and soft. Students will learn about vibrations, sounds, math, and so much more.

Art



WELCOME! I'm **Mrs. Skulnik**, the **Art Teacher** at **Poinciana STEM Elementary!**

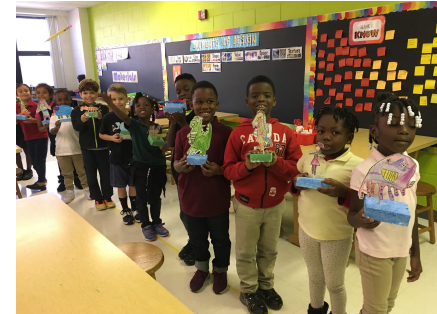
The goal of our visual art curriculum is to create a safe and fun learning environment where students can explore and refine their creative talents! Students will have access to a variety of materials, learn several techniques, and become familiar with different artists and illustrators.



I use the visual arts to help students express themselves and, whenever possible, to reinforce the academic concepts they're focusing on in their regular classrooms. I encourage children to take creative risks, think independently, and, of course, always do their personal best!

[Art Video](#) (Pre-Covid)

Click the link above



Media

April Nobles



When Students visit the Media Center, they participate in lessons related to science, social studies and literacy standards. Students also check out books to take home to read.

School Clubs and Teams

- Academic Games Competitive Teams – Math/Social Studies
- Math Club
- Tazbot's Competitive Robotics Team
- SECME / Mad Pandas – Competitive
- Lego Robotics Club
- Future Teachers of America
- PNN – “Poinciana News Network”
- Safety Patrol Club
- Chorus
- Green Team
- Technology Club



***Internationally Recognized
Competitive First Lego League
Teams!***



**2021 Palm Beach County
Green School of Excellence**

Exceptional Student Education

Mrs. Wallace



ESE Services

- Inclusion Model (Support Facilitation)

ESE Teacher supports students in Gen Ed setting with Pull out as needed.

- Speech/Language Services

SLP pulls out to resource room for Speech and/or Language therapy

- Gifted Program- Gifted endorsed teachers in grades K - 5

What if my child has an IEP?

IEP will be implemented as currently written when possible. PreK should develop a new IEP prior to kindergarten. Please provide copy with registration



Please contact Mrs. Wallace at 561-739-5700 or email alexandrea.wallace@palmbeachschools.org with specific questions or concerns.

ESOL Coordinator/ Teacher

Ms. Chow

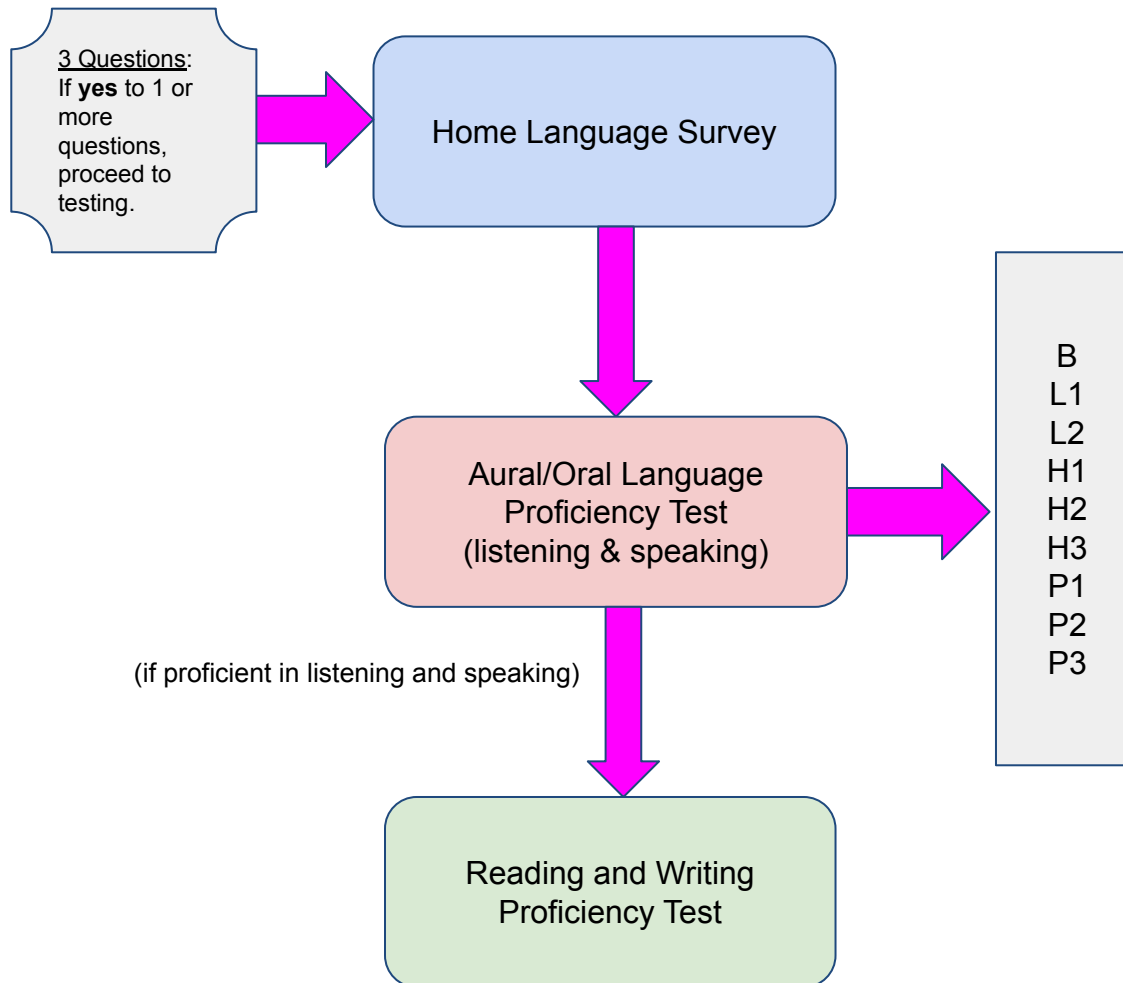


What is ESOL?

- **E**nglish **S**peakers of **O**ther **L**anguages
- ESOL is **not** ESE
- It is a program to help English Language Learners (ELL) develop:
 - English needed for social interaction
 - Academic English needed for successful participation in school



ESOL Program Entry Criteria and Procedures



Services and Accommodations

SERVICES

- Small group (push in to classroom / pull out to ESOL office)
- Remedial / Extra support



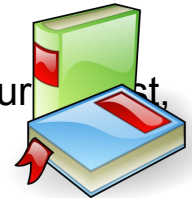
ACCOMMODATIONS (during testing and FS)



Flexible Setting: Tested in a different room with other students.

Flexible Scheduling: Testing may be provided in several brief sessions in one school day.

Flexible Timing (Additional Time): may be provided additional time during test, however, needs to



completed by end of the day.

Limited Assistance in Heritage Language

Approved Dictionary: Access to an English to heritage dictionary and/or heritage dictionary to English.

Lunch

School Food Service

- Free breakfast for all Poinciana students
- \$2.05/daily for lunch
- Go to www.palmbeachschools.org/sfs to apply for meal benefits

<http://www.palmbeachschools.org/sfs>

Poinciana Extended Learning



Ms. May

FY 22 REGISTRATION

Thank you for your interest in our program.

Pre- enrollment Interest Form

- Can be found on the Poinciana Website under Poinciana Extended Learning (PEL). Once you have completed the pre-enrollment form. You will receive a call from Ms. May when you can pick up the registration packet.

<https://poes.palmbeachschools.org/>

- **Programs Monthly Cost**
 - **Morning Care 6:30AM-7:30 AM \$ 62.00**
 - **Part Time 2:00PM-4:00PM \$ 122.00**
 - **Full Time 2:00PM- 6:00PM \$ 244.00**



How can I register ?

Registration packets are available in our afterschool office. Accepted forms of payment are cash, checks and money orders. Checks and money orders must be made payable to: **Poinciana Elementary School**. A completed registration packet with a non-refundable \$25 registration fee (per child) is required and due at the time of registration. **Students are not permitted to attend the program until the registration payment and paperwork is received.**

Registration Packet Includes

Your Registration Packet includes:

ü **Signature Card and Memorandum** (1 per family), (Parents must print and sign their names to the signature card) Anyone who is authorized to pick up your student please print their name. At the time of pick up their ID will be checked and then they sign.)

ü **Parent Handbook Sign off** (1 per family),

2021-2022 Afterschool Payment Schedule (1 per family),

ü **Afterschool Late Pick- up Form** (1 per family),

Remind Form (1 per family). If you are already on REMIND there is no need to register again.

ü **Form # 2577 Late Payment Fee Waiver** (1 per family)

ü **Form # 2512 Sign In/OUT Requirements & Payment Responsibility of Subsidized Afterschool Program Fees (ELC ONLY).** (1 for each child)

Instructions

Complete the following for each child

Ø 2021-2022 Registration Form

Ø Signature Card- Authorized individuals must print and sign name

Ø 2021-2022 Parent Handbook Sign off (must sign and date last page)

Ø Form # 2512 Parent Statement of Understanding (**ELC Clients ONLY**)

Ø Afterschool Late Pick up form Form # 2577

Ø Enclose the \$25 Registration Fee per child in the payment envelope. (Please remember to put your child's name on the envelope)


PBSD Employees

Ø If you are a school district employee and are eligible for the employee discount, please fill out PBS form 2476 by the requested deadline that the district states for approval. Forms must be resubmitted every school year. This is submitted electronically.

Ø Afterschool Part-time Pick up Extension for Qualifying Employees FY 22, PBS form 2469. Remember your Principal must sign it and that gets returned to Ms. May.



Snap shot into the program

- **Staff and students follow COVID 19 Protocols outlined by the State and PBCSD.**
- **Daily Schedule**
 - 2:00PM Dismissal Pel staff pick up students
 - 2:05-2:30PM Snack in Cafe'
 - 2:30-3:30PM SEL meeting, Hmw club
 - 3:30-5:30PM Outplay, ELO's, Enrichment activity.
 - Cooking Club
 - Explore Literacy
 - Sea Life Experience
 - Space Exploration
 - 6:00PM Dismissal
- **Kdg-5th grade students have participated in following Virtual ELO's (Expanded Learning Opportunities) From November 2020-Present**
 - Green Mouse Academy (Animation)
 - Palm Beach Zoo
 - CCE ART(Center for Creative Education)
 - Masks Around the World
 - Meet the Color Monster
 - Paint My Feelings
 - Build IT Up
 - Game Characters
 - PBC Literacy Program
 - Stories & Stem
 - Read, Lead, Succeed
 - SEL (Social Emotional) Literacy



With the Literacy programs the students received a copy of each book used during the ELO.

- These are educators that work for Youth Organizations that provided 5-6 virtual sessions to all students in the program.

Fy 22 (2021-2022)

Looking Forward to Bringing Back

- Cooking Club- PEL Staff
- Explore Literacy- PEL Staff
- BasketBall Club- PEL Staff
- Lego Club- PEL Staff
- Baton Club-PEL Staff

ELO's

- YMCA Activities
 - Fishing Club
 - Denson Pool- Swimming
- Much more!!



School Advisory Council

- SAC is a resource for the school community
- Committee of teachers, administrators, parents, guardians, business and community leaders
- Develops School Improvement Plan
- Election of officers held in the fall



Parent Teacher Association

The cornerstone of an effective PTA is parent involvement which helps promote students' well-being and educational success.

Contact the PTA at Linda.millicarek@palmbeachschools.org

The Poinciana Elementary School PTA...

- Sponsors health and wellness events
- Conducts family events such as dances, holiday shopping, movie nights and family fun nights
- Purchases educational materials to enhance classroom learning
- Supports student organizations
- Recognizes teachers and staff during Teacher Appreciation Week

**Join the PTA and help secure the highest advantages
in physical, mental and social education for all
Poinciana students.**

Your Best **STEM** Choice!

#stemstartedhere

- Like us on Facebook!
<https://www.facebook.com/poincianastem/?ref=bookmarks>
- Follow us on Twitter!
[#stemstartedhere](https://twitter.com/PoincianaStem)
- Our Webpage:
- poincianastem.org

School Communication

Mrs. Tanya McDowell Principal

tanya.mcdowell@palmbeachschools.org

Dr. Valerie Valcourt Assistant Principal

valerie.valcourt@palmbeachschools.org

- Class Dojo
- Robo Calls, Emails, and Text Messages using the parentlink system
- SMORE Bi-weekly school Newsletter